

Human

3D printed technopolymer, metal stratified



AGGIOLIGHT

Light fixture description

Human is a concept and unique fixture, manufactured in order to show the AggioLight capability to craft make exclusive and complex 3D shapes. The object is created through 3D printing, generating a technopolymer shape. After a metal stratification process, the fixture turns into a metal shape and can be enriched by any kind of galvanic finishing.

Lighting fixture description

Reference code	C2oAL-0006-Do3Roo
Degree of protection IP/IK	-
Mounting type	hanger
Color / finish	Gold plated stratified metal finish on 3D printed technopolymer
Physical dimensions	h. 390 mm x p. 220 mm x l. 150 mm - 1 kg h. 15.4" x p. 8.7" x l. 5.9" - 2.2 lb
Plug	wall bracket
Notes	available in different finishing, as per table at page 3.

Light source

Wattage	-
Lumen	-
Color Temperature (K)	-
Voltage	-

Control gear / Ballast / Transformer

Manufacturer	-
Type	-
Reference	-
Voltage / frequency	-
Wattage	-
Dimming / addressable	-
Other	-



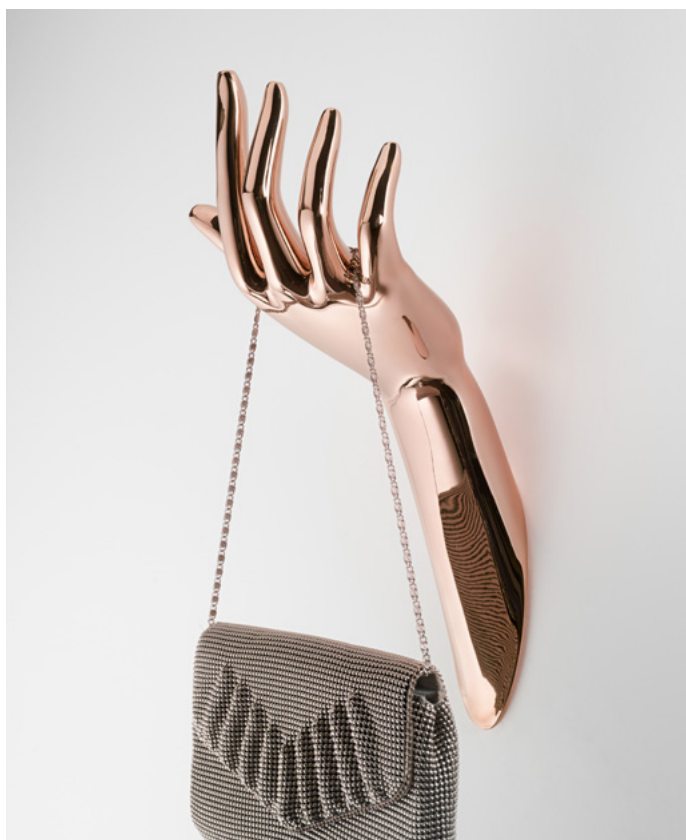
Human

3D printed technopolymer, metal stratified

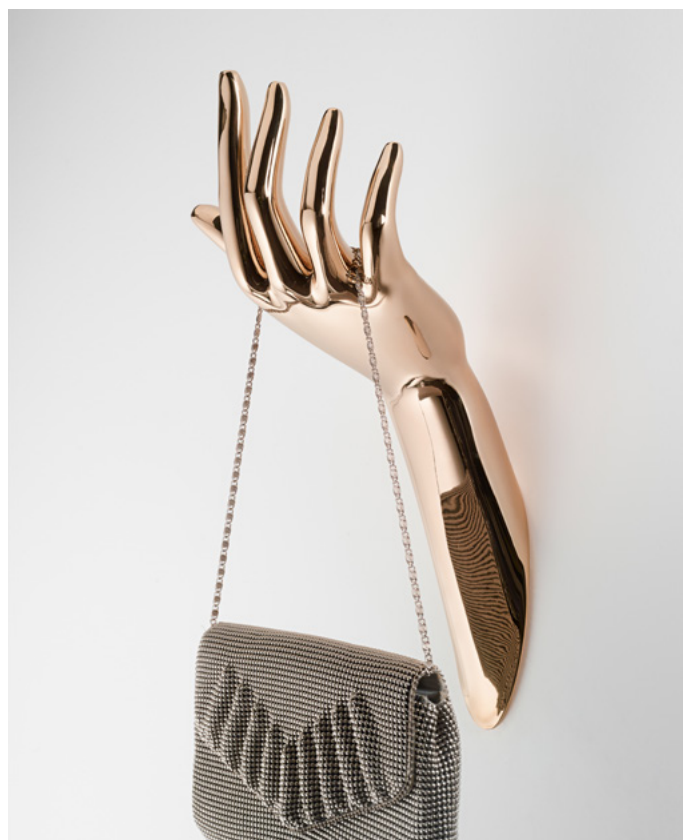


AGGIOLIGHT

Finish examples



Copper



Rose Gold



Gold

Human

3D printed technopolymer, metal stratified

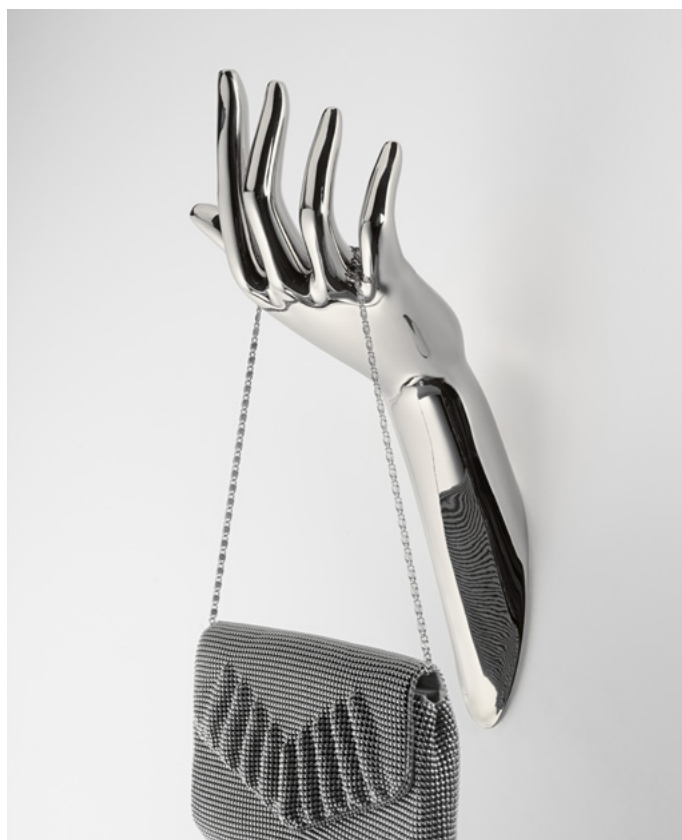


AGGIOLIGHT

Finish examples



Nickel



Chrome

Human

3D printed technopolymer, metal stratified

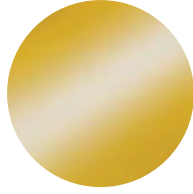
Metal finish options



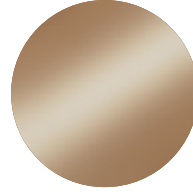
ANTIQUÉ BRONZE
Available: • Glossy • Matt



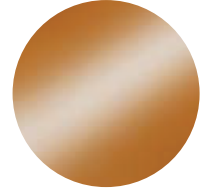
ANTIQUÉ BRASS
Available: • Glossy • Matt



GOLD 24KT PLATED
Available: • Polished • Satin



ROSE GOLD PLATED
Available: • Polished • Satin



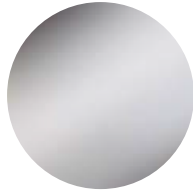
COPPER
Available: • Polished • Satin



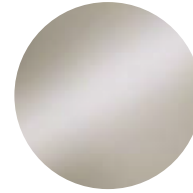
BRASS
Available: • Polished • Satin



BLACK NICKEL PLATED
Available: • Polished • Satin



CHROME PLATED
Available: • Polished • Satin



NICKEL PLATED
Available: • Polished • Satin



STAINLESS STEEL
Available: • Polished • Satin